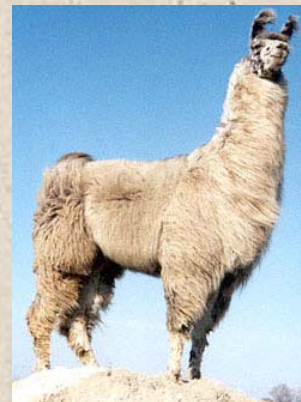
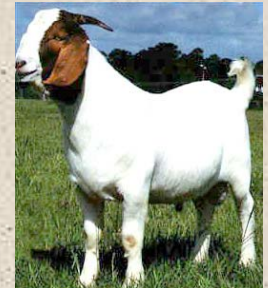




Selecting Livestock for a Small Acreage Farm

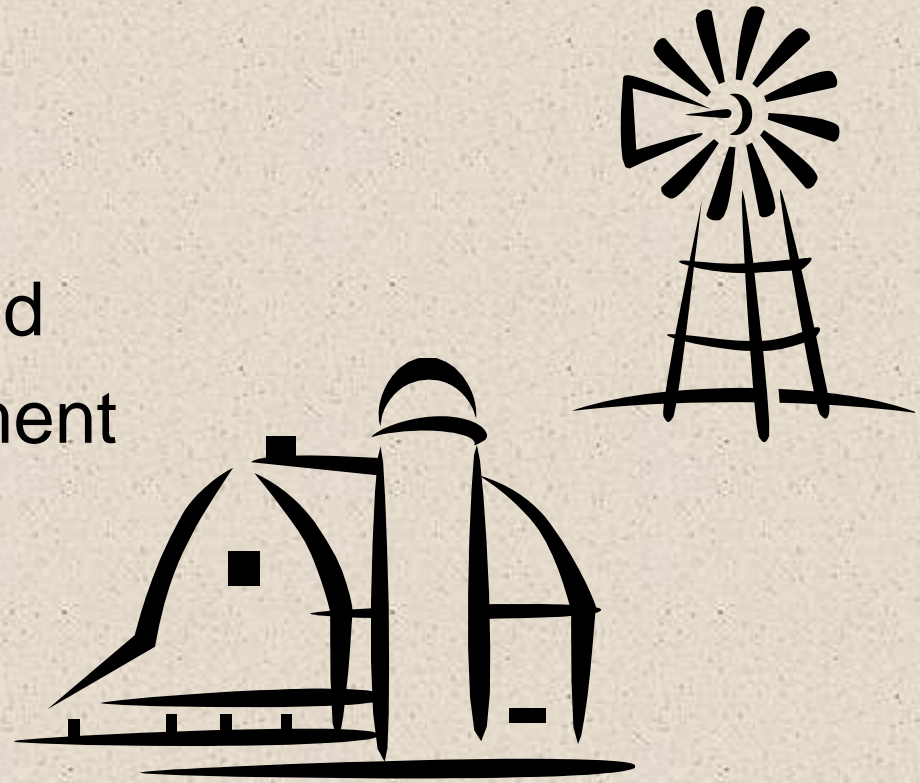


*Extension Livestock Agent
Marlin Eisenach*



Identify Resources

- Land
 - 1 Acre to 35 Acres
 - Dry Land or Irrigated
- Managerial Commitment
- Labor/Time
- Buildings
- Zoning Regulations



Choosing a Specific Type of Livestock

- Personal Preference
- Facilities
- Feed Resources
- Special Equipment Needs
- Experience Required
- Time Commitment
- Finances Available
- Manure Disposal
- Available Markets
- Predator Control
- Purpose
 - Raise your own Meat
 - Graze Weeds
- Make Money
- Hobby

Horses

- Great Hobby
- High Purchase Cost
- Feed Costs
- 4-H/FFA Project



Cattle

- Purpose
 - Meat Production
 - Breeding
- \$ Investment
 - Purchase Costs
 - Feed Costs
- Pride Owning Cattle
- 4-H/FFA Project



Sheep

- Types
 - Meat Breeds
 - Wool Breeds
- Good Grazers
- Predator Concerns
- 4-H/FFA Project



Goats

- Types
 - Dairy Breeds
 - Meat Breeds
- Tremendous Grazers
- Requires Well Built Fences
- 4-H/FFA Project



Swine

- Rapid Growth for Meat Production
- Little Capital Required
- Odor can become a Problem
- 4-H/FFA Project



Llama

- Great Companion Animal
- Guard Animal
- Low Investment Costs



Alpaca

- Very Popular
- High Investment
- Fiber has Great Value

