

Morgan County Horse Project

Horse Project Requirements

In order to participate at the Morgan County Fair, you are required to complete state levels testing requirements. The levels program offers 4 divisions: Western, English, Showmanship and Ranch Horse. Each division has 4 levels that can be completed.

In order to compete in Western and English events, you must pass both a written test to check your knowledge and what you have learned in the program, along with a riding test done by a certified rater to check your riding ability for level 1. Because 4-H is about learning, and not just participating, both aspects are important.

In order to compete in the speed events (gymkhana), you must be a western level 1.

In order to compete in the Ranch Horse and cattle (roping) classes, you must test in the Ranch Horse division to level 2.

There is only one written test to take for every level which covers every division. However, the riding tests for each level in each division are different.

You may look at the requirements for each riding test by going to <http://co4h.colostate.edu/program-areas/horse-resources/levels-testing/>

You must be rated by a certified rater for riding tests. Contact Marlin for a list of raters in the area. Written tests must be taken in the Extension Office. You may take the tests at any point in the year. Testing in the fall is highly recommended. However, July 10 is the last day to submit tests to the Extension Office to determine which levels you are at, which will determine which classes you can compete in at the 2025 Morgan County Fair.

*Levels 1 and 2 of each division may be completed in county. The state requires levels 3 and 4 be tested outside the county.



MORGAN COUNTY
COLORADO STATE UNIVERSITY
EXTENSION

Marlin Eisenach, Livestock Agent, Morgan County;
marlin.eisenach@colostate.edu; 970-542-3543



Additional Information

Animal Care and Housing Form

All 4-H members with animal projects will be required to have a completed, signed and approved animal Care and Housing Form for Colorado 4-H Livestock Projects form on file at the Extension Office.

If your animal project is not housed at your place of residence then you will need to go to our 4-H Website, print the Animal Care and Housing form and fill out both sides of that form.

Premises ID

Premises identification will provide quick and accurate traceability of livestock and locations in the event of an animal health concern, which will help maintain the health of all Colorado livestock. Go online to Colorado Location Identification (LID) Registration Form at <http://col.st/tzSZP>.

4-H Open Horse Riding 2025

Indoor and outdoor arena when weather permits

Schedule:

April 3, 10, 17, 24

Horse ID Due date 5/1/2025, by 4 pm, 4-H Online

May 1, 8, 15, 22, 29

June 5, 12, 19, 26

July 10, 17

County Record Books due July 9, 2025

Fair Show Dates:

4-H Horse Show Saturday, July 19, 2025

4-H Gymkhana Sunday, July 20, 2025

4-H Ranch Horse Tuesday, July 22, 2025

Colorado State University Extension is an equal opportunity provider. | Colorado State University does not discriminate on the basis of disability and is committed to providing reasonable accommodations. | CSU's Office of Engagement and Extension ensures meaningful access and equal opportunities to participate to individuals whose first language is not English.

Colorado State University Extension es un proveedor que ofrece igualdad de oportunidades. | Colorado State University no discrimina por motivos de discapacidad y se compromete a proporcionar adaptaciones razonables. | Office of Engagement and Extension de CSU garantiza acceso significativo e igualdad de oportunidades para participar a las personas quienes su primer idioma no es el inglés.

Col.st/11013

Created by Jamie Dixon

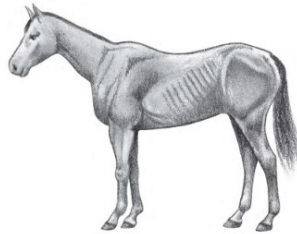
Morgan County Horse Project

Body Condition Score Chart

Areas of emphasis for body condition scoring: thickening of the neck, fat covering the withers, fat deposits along backbone, fat deposits on flanks, fat deposits on inner thighs, fat deposits around tail head, fat deposits behind shoulders, fat covering ribs, shoulder blends into neck.

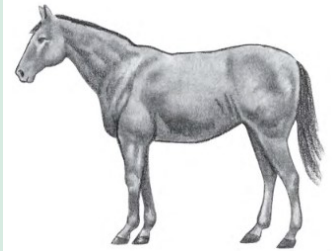
1 Poor

Animal extremely emaciated; spine, ribs, tail head, points of hip and buttock projecting prominently; bone structure of withers, shoulders, and neck easily noticeable; no fatty tissue can be felt.



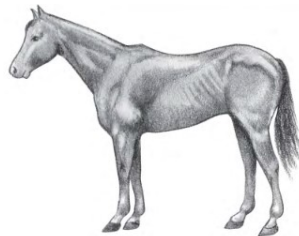
5 Moderate

Back is flat (no crease or ridge); ribs not visually distinguishable but easily felt; fat around tail head beginning to feel spongy; withers appear rounded over spine; shoulders and neck blend smoothly into body.



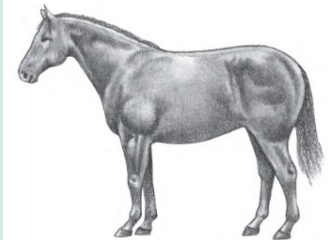
2 Very Thin

Animal emaciated; slight fat covering over base of spine, ribs, tail head, points of hip and buttock prominent; withers, shoulders, and neck faintly discernable.



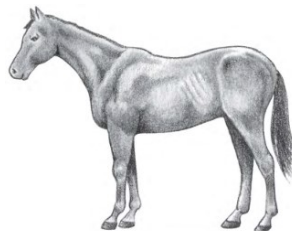
6 Moderately fleshy

May have slight crease down back; fat over ribs fleshy/spongy; fat around tail head soft; fat beginning to be deposited along sides of withers, behind shoulders, and along sides of neck.



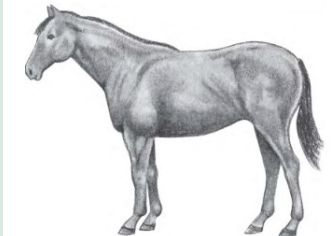
3 Thin

Fat buildup about halfway on spine; slight fat cover over ribs; spine and ribs easily discernable; tail head prominent, but individual vertebrae cannot be identified visually; points of hip appear rounded but easily discernable; points of buttock not distinguishable; withers, shoulders, and neck accentuated.



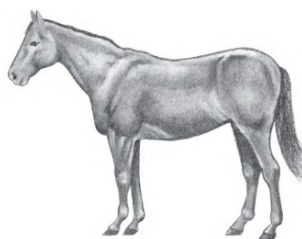
7 Fleshy

May have crease down back; individual ribs can be felt, but noticeable filling between ribs with fat; fat around tail head soft; fat deposited along withers, behind shoulders, and along neck.



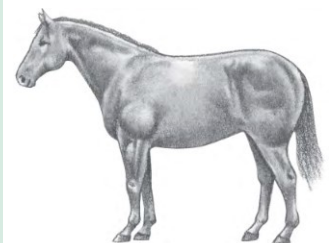
4 Moderately Thin

Slight ridge along back; faint outline of ribs discernable; tail head prominence depends on conformation, fat can be felt around it; points of hip no discernable; withers, shoulders, and neck not obviously thin.



8 Fat

Crease down back; difficult to feel ribs; fat around tail head very soft; area along withers filled with fat; area behind shoulders filled with fat; noticeable thickening of neck; fat deposited along inner thighs.



9 Extremely Fat

Obvious crease down back; patchy fat appearing.